

3rd prize, Topic 1 Tertiary Category

Idyllic Changi

Team members:

Chan Qiu Qing Lee Kah Hui

Jeremy Jee Teoh Xin Yi

(National University of Singapore, University of Tokyo, Waseda University)

Participants' Write Up:

Idyllic Changi reimagines the sleepy precinct of the Changi Point area around the central concept of experiences, be it a leisurely hike through nature, hands-on art jamming sessions, or volunteering with the underprivileged. Nevertheless, we will also preserve Changi's reputation as a well-loved, peaceful respite from urban hustle and bustle. Embracing its rustic heritage, existing buildings will be lovingly restored to their former glory, but repurposed to serve a new generation of Singaporeans and their changing interests and tastes.

Idyllic Changi will be designed around heritage, community, and nature, carrying on its valuable historical legacy. In the reimagined Changi, these themes will be expressed through four main districts:

- **Cultural Heritage:** small-scale tenement museums will present the lived experiences of everyday Singaporeans involved in our hawker heritage, kampung life, disappearing trades, biodiversity, and social histories.
- **Lifestyle:** our signature innovative shopping district, including a thrift commune, a glasshouse village, and a weekend farmers' and craft market, is targeted at forward-looking, environmentally conscious Singaporeans.
- **Social Services:** an integrated social services hub, consisting a hospice, youth residence and youth activity centre, will continue Changi's legacy of helping needy Singaporeans.
- **Seafront:** a seafood market founded on a farm-to-table concept will provide delicious and sustainable cuisine, aligned with Singapore's domestic agriculture push, while a floating swimming lagoon will maximise Changi's natural beauty with white beaches and crystal clear blue waters.

By tapping on the established reputation of Changi Village, we hope to redefine Changi Point's current charms for Singaporeans of all ages.

Jury Citation:

The jury commended the focus on preserving the rustic nature and current pace of life in Changi Point in this master plan, as well as aspirations to link the area to larger causes like domestic agriculture initiatives and social services. In particular, the aquatic farm-to-table kelong idea was appropriate and refreshing. The tram was also singled out as a thoughtful way to slow down the speed of circulation in the area, while connecting various dispersed uses in Changi Point. Overall, the jury felt that the range of uses proposed were interesting and catered well to people with different interests.

Heritage | Community | Nature

Idyllic Changi

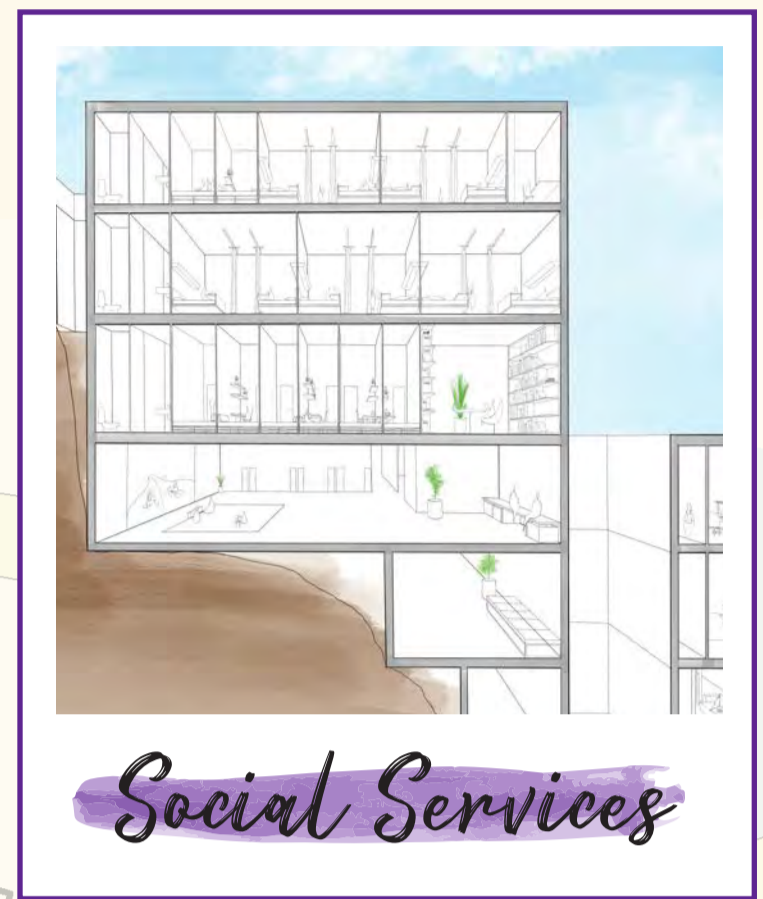
Idyllic Changi reimagines the sleepy precinct of Changi Point area around the central concept of experiences, be it a leisurely hike through nature, hands-on art jamming sessions, or volunteering with the underprivileged. As an experiential playground for innovative activities, Changi will remain a well-loved, peaceful respite from the urban hustle and bustle. Embracing its rustic heritage, existing buildings will be lovingly restored to their former glory, but repurposed to serve a new generation of Singaporeans and their changing interests and tastes.

Idyllic Changi will continue to be designed around heritage, community and nature, carrying on its valuable historical legacy. In the reimagined Changi, these themes will be expressed through four main districts: the cultural and heritage, lifestyle, social services, and the seafront districts. By tapping on the established reputation of Changi Village, we hope to redefine Changi Point's current charms for Singaporeans of all ages.

Leveraging on Changi's picturesque seaside view, the highlight of Changi's Seafront District will be the Changi Seafood Market and its accompanying pier. The market itself will focus on "freshness you can taste" by promoting local produce, farm-to-table concept restaurants, and agritourism opportunities for nearby fish farms. Its other selling point will be Singapore's largest aquatic recreation area, the Changi Lagoon. Featuring white beaches and crystal clear waters, it will be sure to cement Changi's reputation as an idyllic respite in the East.

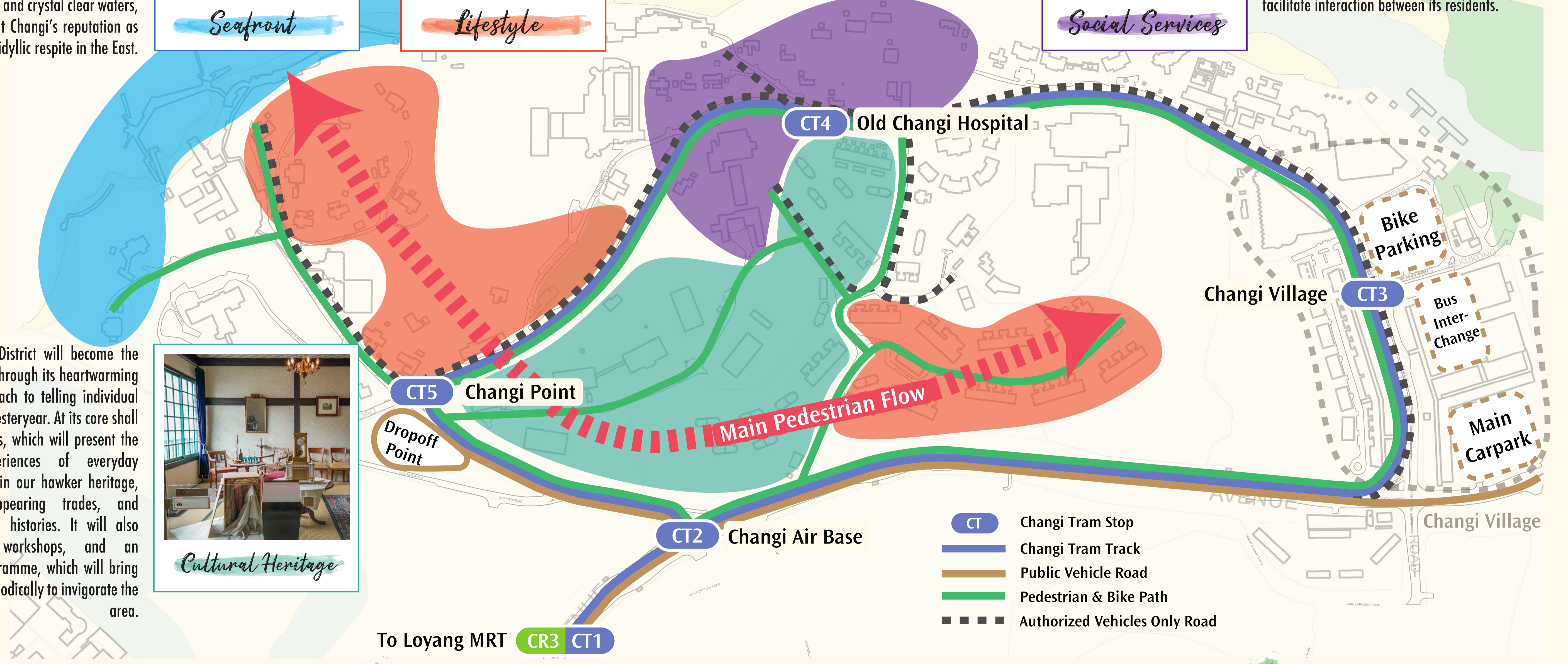


The Lifestyle District will prominently feature a thrift commune, glasshouse village, and Singapore's first permanent outdoor market as its key selling points. As Singapore's signature innovative shopping district, it aims to rejuvenate the rustic atmosphere of the area and appeal to forward-looking, environmentally conscious Singaporeans. The daring outdoor installation will further blur boundaries between night and day, and nature and built environment. To cap off each week, the weekend marketplace will host a lively farmer's market, craft booths, and thrilling hawker showdowns.

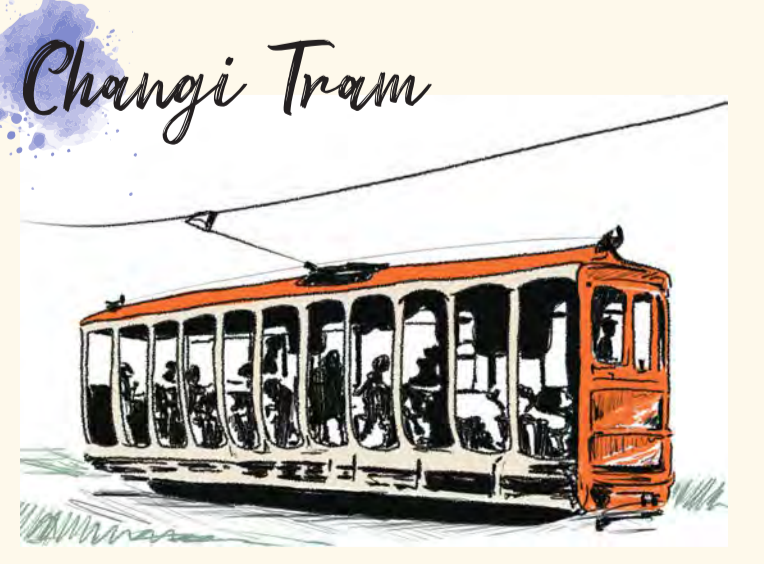


The Social Services District will continue Changi's legacy of helping needy Singaporeans, centred around the integrated social services hub situated in Old Changi Hospital. Designed around the concepts of experiential learning, independence, and autonomy, the hub will host a hospice, youth residence, and youth activity centre, with hopes that the beautiful surroundings and shared amenities - including Singapore's first trash playground - will facilitate interaction between its residents.

The Cultural Heritage District will become the heart of idyllic Changi through its heartwarming and experiential approach to telling individual stories of Singapore's yesteryear. At its core shall be small-scale museums, which will present the personal lived experiences of everyday Singaporeans involved in our hawker heritage, kampung life, disappearing trades, and biodiversity and social histories. It will also comprise galleries, workshops, and an Artist-in-Residence programme, which will bring in new programmes periodically to invigorate the area.



Explorable on foot, bike, or tram, Changi will be designed to reignite the spirit of exploration and discovery. Existing roads will be repurposed into integrated pathways surrounded by verdant greenery, facilitating Changi's transformation into a car-lite, pedestrian friendly district. Despite that, Changi will be more integrated into our public transport system than ever before. In line with LTA's vision for Walk Cycle Ride SG, Changi will be linked to the Loyang Cross Island Line station via the Changi Tram, ensuring that Changi remains easily accessible via public transport. Commuters may also opt to cycle or ride-share, tapping on existing parking spaces at the nearby Changi Village.



The Changi Tram will be Singapore's first heritage tram system, recalling the legacy of electric trams that ran on Singapore's streets in the late 1800s. Passengers will be pleasantly surprised by the novel sensation of riding in a single, open-air carriage, and its accompanying sensory stimuli: gentle breezes accompanied by unfamiliar smells and a background of lapping waves. The tram will loop around the Changi area at a frequency of 3-5 minutes and feature a fare system similar to the LRT system. Through these, we hope to completely integrate the tram into Singapore's existing public transport system, making it a convenient and affordable way to get around.



Integrated Pathways
Most roads in the area will be redesigned into integrated pathways, positioning the following roads side-by-side: single-carriage roads for authorized vehicles*, special roads for the Changi Tram and dedicated tracks for pedestrians and cyclists. The different paths will be clearly labelled and demarcated with flowering shrubs, creating safe and visually appealing roads. *The single-carriage road is only for authorized vehicles who need to get to private facilities in the area such as the Singapore Air Traffic Control Centre or Changi Sailing Club

Seafront District

The Seafront District will bring Changi back to its days as a major fisheries complex and popular holiday location. Tapping on its proximity to the sea, the revitalised district will feature Singapore's signature aquatic recreational area with crystal clear waters. Visitors will also be able to feast on our local produce at Changi Seafood Market, which will provide spaces for farm-to-table concept restaurants, showcases of Singapore's local aquatic produce, and promote agritourism. Eco-friendly development of the waterfront area will be ensured via rigorous procedures to minimize our impact on the environment.

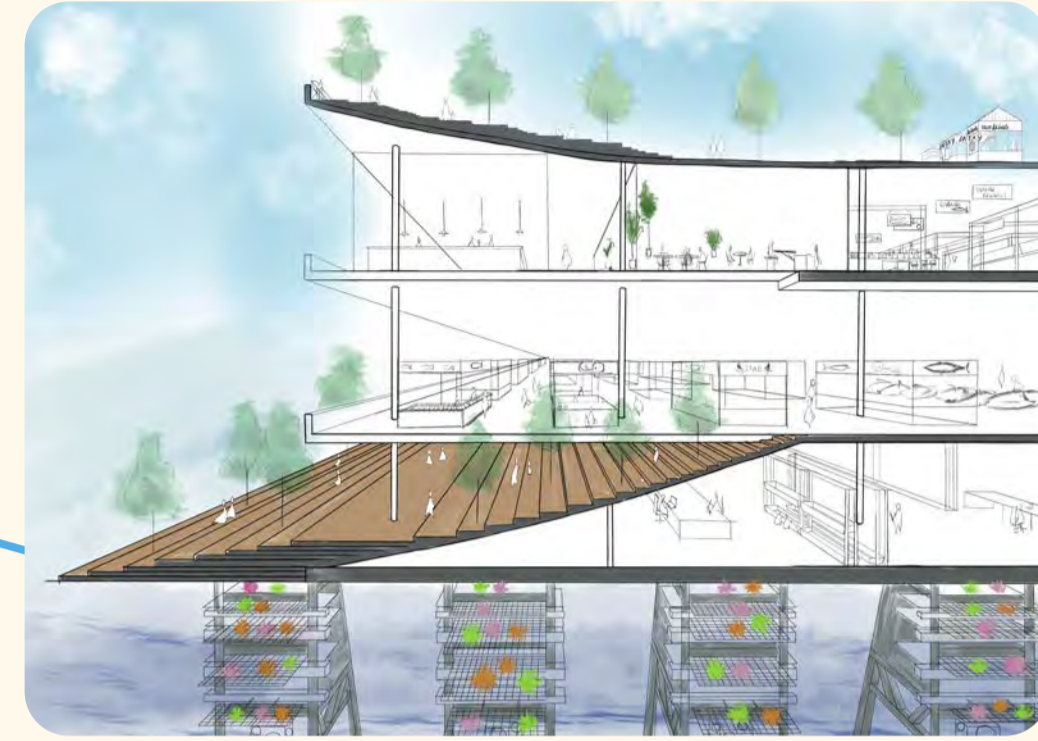
Changi Lagoon

Standing at 1.9 acres, Changi Lagoon will be Singapore's largest aquatic recreational area, five times the size of the Marina Bay Sands infinity pool. It will be Singapore's first Crystal Lagoon®, a worldwide chain of eco-friendly man-made lagoons, featuring crystal clear turquoise waters, white sandy beaches, and an artificial island in the centre. Half the lagoon will be dedicated to leisure swimming, while the other half will be for water sports such as jet skiing and flyboarding. As an ActiveSG facility open to the public, the lagoon will bring affordable water sports to the Singaporean public.

Appropriate for water-conscious Singapore, the Crystal Lagoon®'s patented technologies will consume only 2% of the energy load and 1% of the chemicals for a similarly-sized swimming pool. It can also be filled using seawater, which will be converted to freshwater. These allow for a safe, eco-friendly and water-efficient recreational facility.



Seafood Market



In line with the Singapore Food Authority's '30 by 30' domestic agriculture initiative, the Changi Seafood Market will be the largest showcase of local produce in Singapore. Fresh seafood from nearby fish farms will be sold at the wholesale market, which will also supply farm-to-table restaurants on the second floor. Other local produce sold in the market can be prepared at the al-fresco food terrace on the top floor, involving various local agricultural artisans.

The underwater floor will be the highlight of the market's agritourism promotion initiative, which also includes its aquaculture gallery and fish farm tours. Situated within will be a marine biology lab that exhibits research on local marine biology, such as corals and sea creatures, in the Changi and Pulau Ubin area.

The market itself is expected to be visually interesting, with current architectural plans including "stilts" in the form of concrete pillars, similar to the man-made reef structures for coral restoration deployed at the Sisters' Islands.

Communitality will be the central theme for the remaining components, including an open sea pier and boardwalk in the front and adjacent rustic wooden steps. These facilities will provide comfortable spaces for visitors to sit, relax, and observe the fishing boats coming in at the dock.

Lifestyle District

The lifestyle district will rejuvenate the rustic atmosphere of the area with lively shopping concepts, designed to appeal to forward-looking, environmentally conscious Singaporeans. By integrating existing buildings with natural features, it will take advantage of Changi's beautiful surroundings to carve out its own niche as Singapore's very own permanent thrifting commune. Every weekend, pop-up activities - including hawker showdowns - will create excitement and novelty for every visitor.

Changi Marketplace



As Singapore's first permanent thrift commune, the marketplace will focus on Made in Singapore products, handicrafts and clothing with a sustainability angle, hopefully involving home-grown vendors like The Social Space. Markets will also be established to spotlight Singapore's local coffee and craft beer industries, with boutique cafes and restaurants such as the Coastal Settlement as mainstays of this area. Existing buildings in the area will be creatively repurposed and connected around a central atrium. The thrift market also hopes to bring Singapore closer towards a circular economy by familiarising the public with the charm of second-hand goods.

On weekends, pop-up booths will be set up in the central atrium as part of a farmers market and craft market to foster a sense of community. Local producers, including farms, home bakers, and blog shops, can take this chance to increase brand awareness, while the market itself will benefit from its reputation as a purveyor of artisan products from indie shops.

Hawker Battleground



During the weekdays, Turnhouse Park will be a peaceful site for children and pets to frolic and play. To liven up the park, water features will be installed, including a small-scale waterfall and a shallow stream, which will add diversity to the current landscape of the park.

On weekends, the park will be transformed into a Hawker Battleground, a Masterchef-esque monthly competition pitting budding hawkers against one another. Participants of the NEA Hawker Development Programme will experience running their own stall, while audiences will get to vote for their favourite eateries. The competitive element will elevate overall food quality, and when combined with the al-fresco park side dining, will create an F&B experience unique to Changi.

Glasshouse Forest

Glasshouses nestled amongst the greenery by Changi Marketplace can host cafes and shops, with an al-fresco concept underneath a canopy of fairy lights and trees. The forest can act as an outdoor art exhibition to the style of teamLab's "Resonating Life in the Forest" exhibition that is transformed during the night and day with the use of light projections.



Thrift Village

With more and more people concerned about climate change, a cyclical zero-waste economy is one of the increasingly popular consumer options. We envision a thrift village that nurtures our tastes for second-hand goods, instead of relying on fast fashion in our consumption habits. As a hub for thrifted items, it also reduces current logistical difficulties in dealing with second-hand products.

Social Services Hub

Youth Residential Home | Hospice | Activity Lounge | Social Services Centre

The Social Services Hub will be situated in the Old Changi Hospital, and consist of 4 main portions. Firstly, a youth residential home will be set up for youth from troubled families to be rehabilitated. The home will focus on restoring autonomy and agency for its residents via regular communal activities and qualified career and pastoral care counsellors. Fundamentally, the home should instill faith in their residents about their personal upward mobility, regardless of family background.

Secondly, the middle block will be transformed into a hospice, tapping on existing accessibility infrastructure. With expanded windows, the hospice can maximise the benefits of the beautiful seaview outside, providing a cheery environment for hospice residents to recuperate. Common spaces will also be set up to facilitate interactions between youth home and hospice residents.

A third area of the hub will be remodelled as an activity lounge targeted at youth-at-risk. The lounge will feature youth-friendly infrastructure, such as game consoles, beanbags, and activity studios (dance, crafts, makerspace, and jamming). Youth home and hospice residents who are comfortable with members of the public may also join activities in the lounge.

Lastly, we hope to bring in PAVE Integrated Services for Individual and Family Protection for our social services centre, such that residents in the East have a prominent and convenient location to seek help.



Social Services District

Children & Pets Play Area

The existing 2 storey buildings around the trash playground will be repurposed as shophouses targeted at children and pets. For example, pet-friendly cafes (serving sodium-free food suitable for animals), pet groomers and pet hotels could sit next to toy shops, children's fashion shops and toddler swim schools. We could also incorporate leisure and relaxation activities for parents accompanying their children and furkids. The pets section will be appropriately separated from the children play area.

Trash Playground

Going back to the idea of promoting independence and experiential learning, the trash playground will showcase the 3Rs being applied in everyday life. Structures will be constructed from recycled materials, while small sheds nearby will supply a stock of simple tools and materials that children can tinker with. Younger children will be attracted to play in existing structures, while older youths may be more interested in creating their own items to add to the playground. Nevertheless, safety remains a key consideration: playworkers will be on shift whenever the playground is open, and signs will be put up at the entrance encouraging users to take charge of their own safety and play responsibly.



The Cultural Heritage District's main focus is on bridging the past and present, allowing future generations to inherit their forefathers' legacies. One key cornerstone of the district will be its experiential approach, tapping on hands-on activities and workshops to engage visitors on a deeper level. Museums in the district will be curated to tell stories with a local, personal touch, passing down anecdotes that offer a glimpse into the lives of days gone by. The Artist Cluster will host a permanent exhibition of local works, but also nurture new talent for our future through an incubator programme. Amidst it all, the Plaza will serve as a central gathering hub for people to interact freely, promoting vibrant conversations.

Cultural Heritage District

Heritage Row

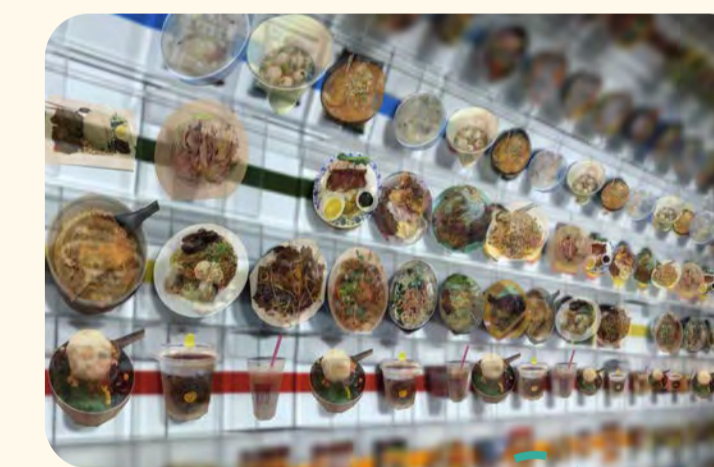
Hawker | Kampung Life | Vanishing Trades

The signature attraction of Heritage Row will be the SG Hawker Museum, occupying two blocks of buildings. The first block will be dedicated to the history and evolution of hawker culture in Singapore, with a key highlight being the hawker food wall collage. Much like Japan's famous Cup Noodle Museum Yokohama, the awe-inspiring sight of hundreds of life-sized hawker food models on display is sure to attract Singaporeans and tourists alike. The other block will take visitors through the lives of various hawkers in Singapore through reproductions of their living spaces, adorned with their anecdotal stories. A cooking studio for hawkers to teach cooking classes will be established on the top floor, allowing them to pass on their well-honed skills to eager food enthusiasts.

The Kampung Life Museum will showcase architectural styles of the kampung houses in Changi and Pulau Ubin through a series of life-sized and miniature models. Woodworking spaces and workshops will be introduced to nurture traditional building crafts and techniques.

The Vanishing Trades Museum will feature businesses and crafts that are slowly being lost to time, such as Malay carpentry, roadside barbers & cobblers, Nonya needlework, and Chinese lantern painting. It will host a dedicated workshop space with hands-on activities every weekend so our history can be retained by the next generation.

Last but not least, the Changi Biodiversity Library will include books on local biodiversity in Singapore and the region, with a gallery for nature photography and art on the second floor, and an event space for talks on the third floor. It aims to impart the knowledge and importance of natural history to the public.



Changi Plaza

The Changi Plaza shall be an informal gathering hub in the centre of the Cultural Heritage District. It will take the form of a large open space surrounded by seating spaces for users of different age groups and physical abilities, as well as verdant greenery for shade. This flexible design allows for a variety of uses, including public performances by buskers to liven up the area.

Artists' Cluster

With two public galleries, workshop spaces, lodges and studios, the Artists' Cluster will present permanent exhibitions related to the Singaporean arts scene. Featuring the works of pioneers such as Chua Mia Tee and Georgette Chen, the galleries will include works across various mediums, including paintings, poetry, literature, photography. The funds from the gallery will then go towards the Artist-in-Residence scheme, which will nurture talent in budding Singaporean artists.

Block Micro-Museums



Micro-Museums will present a mix of permanent exhibitions and visiting seasonal exhibitions within existing two-storey buildings. The separate buildings will preserve the individuality of each exhibition, while ensuring that it is still convenient for visitors to visit more than one.

A proposed list of permanent exhibitions are: Changing Times of Pre-Colonial Singapore, Stories of the British Soldiers in Colonial Singapore, and NLB's Human x Nature exhibition.

Visitors will begin their journey with a foray into Singapore's 700-year history, gaining new insights into timelines and stories not often seen in the current museum scene.